

The Energy to Thrive™

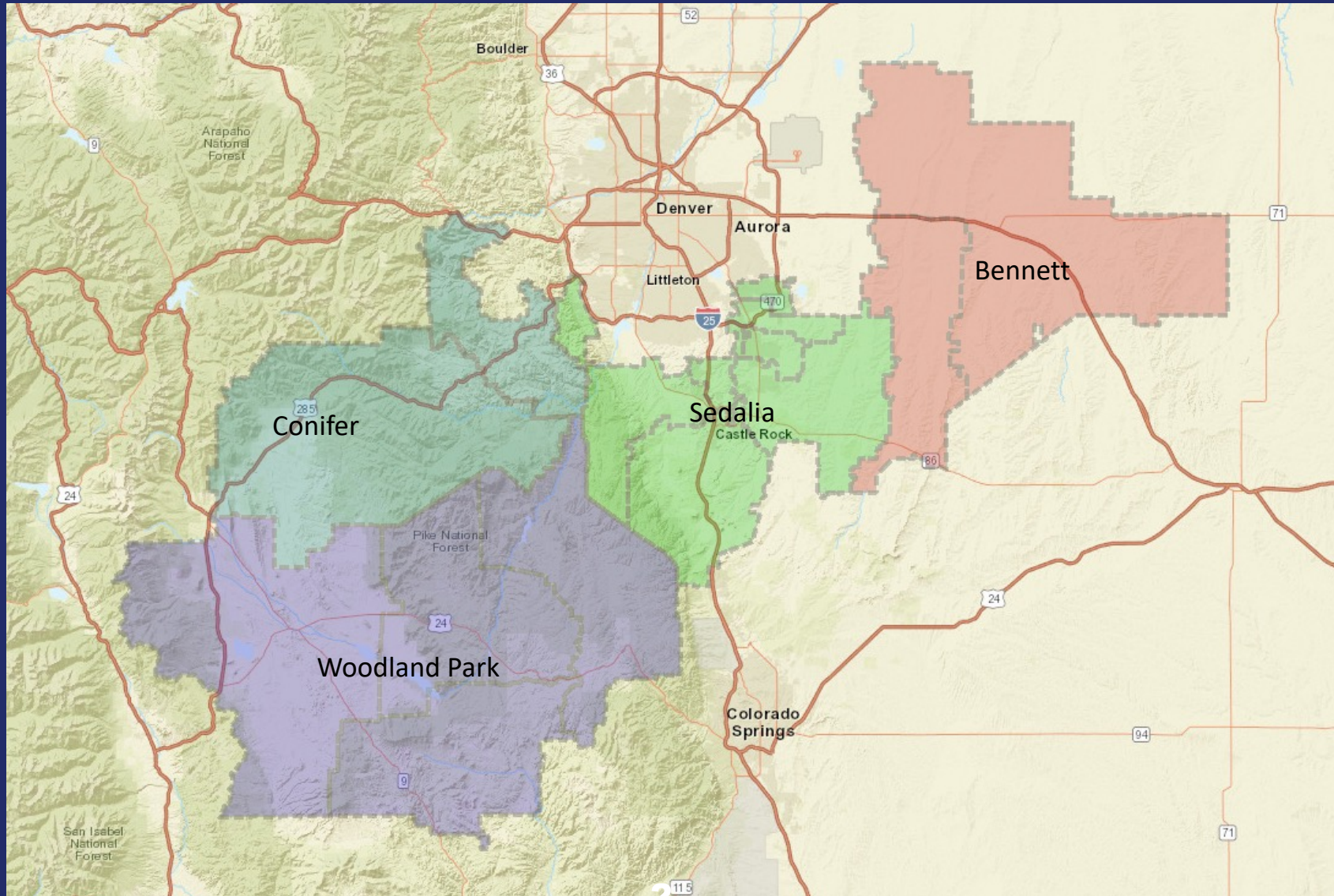
CORE Electric Cooperative Wildfire Mitigation Program

Jordan Ambrogi, Program Manager

9/21/23 EAP Conference

CORE
ELECTRIC COOPERATIVE

CORE Service Territory



Wildfire Risks

- Environmental Risk Drivers
 - Vegetation (extent, type, health)
 - Terrain (steep slopes, soil type, access)
 - Weather/climate (drought, high winds, lightning)
 - Population Density (WUI)
- Systemic Risk Drivers
 - Contact from objects (trees, animals, vehicles, etc)
 - Equipment failure/contamination
 - Equipment contact (wire-to-wire, construction, maintenance)
- Business Risk from Wildfire
 - Loss of service, internet, communications
 - De-energization and impedance to restoration

